

Cangzhou Xingye Pipe Fitting Co., Ltd

ASME B16.47 Ser. A, Ser. B INDUSTRY STANDARD and AWWA Flanges

Weld Neck, Slip-On, Blind.

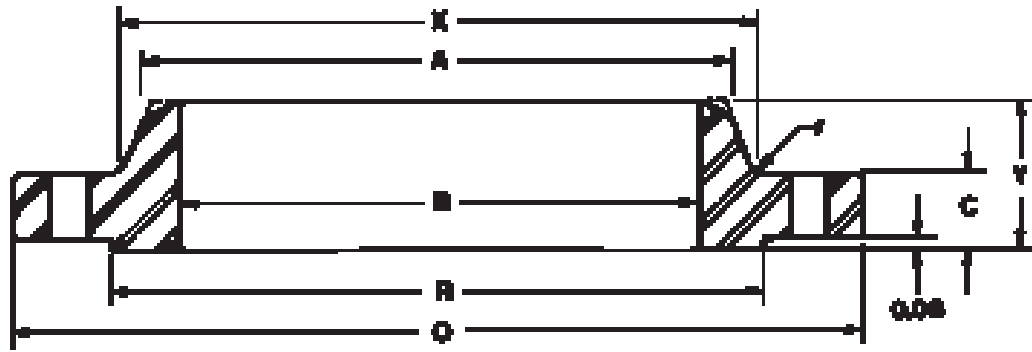
Class 150 to Class 900

The following section is in order by pressure class due to the overlapping dimensions of some standards.

Simply turn to the pressure class required and find the dimensional standard of your choice.

Class 75

B16.47, Ser. B (formerly API-605)

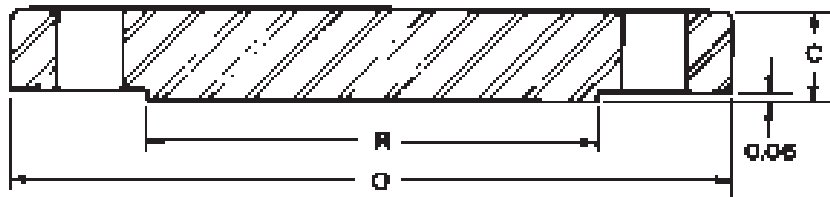


WELDING NECK

Nominal Size	Outside Dia. O	Thickness C		Raised Face Dia. R	Fillet Radius r	Bore B	Length Thru Hub Y	Dia. Hub at Bevel A	Hub Dia. X
		Welding Neck	Blind						
26	30.00	1.31	1.31	27.75	0.31	To be specified by purchaser.	2.31	26.06	26.62
28	32.00	1.31	1.31	29.75	0.31		2.44	28.06	28.62
30	34.00	1.31	1.31	31.75	0.31		2.56	30.06	30.62
32	36.00	1.38	1.44	33.75	0.31		2.75	32.06	32.62
34	38.00	1.38	1.50	35.75	0.31		2.88	34.06	34.62
36	40.69	1.44	1.67	38.00	0.38		3.38	36.06	36.81
38	42.69	1.50	1.75	40.00	0.38		3.50	38.06	38.81
40	44.69	1.50	1.75	42.00	0.38		3.62	40.06	40.81
42	46.69	1.56	1.88	44.00	0.38		3.75	42.06	42.81
44	49.25	1.69	1.94	46.25	0.38		4.12	44.06	44.88
46	51.25	1.75	2.00	48.25	0.38		4.25	46.06	46.88
48	53.25	1.81	2.12	50.25	0.38		4.38	48.06	48.88
50	55.25	1.88	2.18	52.25	0.38		4.56	50.06	50.94
52	57.38	1.88	2.25	54.25	0.38		4.75	52.06	52.94
54	59.38	1.94	2.38	56.25	0.38		4.94	54.06	55.00
56	62.00	2.00	2.44	58.50	0.44		5.31	56.06	57.12
58	64.00	2.06	2.50	60.50	0.44	5.44	58.06	59.12	
60	66.00	2.19	2.62	62.50	0.44	5.69	60.06	61.12	

Class 75

B16.47, Ser. B

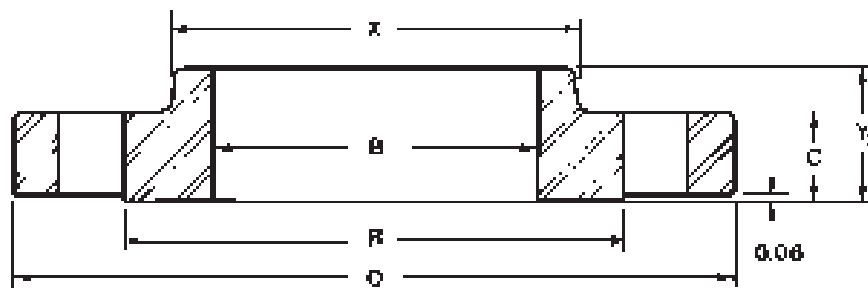


BLIND

Drilling			Approx. Weight		Nominal Size
Bolt Circle	Dia. Holes	No. Holes	Welding Neck	Blind	
28.50	0.75	36	80	225	26
30.50	0.75	40	80	290	28
32.50	0.75	44	90	330	30
34.50	0.75	48	105	390	32
36.50	0.75	52	110	430	34
39.06	0.88	40	145	518	36
41.06	0.88	40	160	595	38
43.06	0.88	44	170	760	40
45.06	0.88	48	185	895	42
47.38	1.00	36	230	1065	44
49.38	1.00	40	245	1185	46
51.38	1.00	44	270	1315	48
53.38	1.00	44	290	1505	50
55.50	1.00	48	310	1665	52
57.50	1.00	48	340	1840	54
59.88	1.12	40	400	2110	56
61.88	1.12	44	430	2300	58
63.88	1.12	44	475	2500	60

Class 75

INDUSTRY STANDARD



SLIP-ON

Nominal Size	Outside Dia. O	Thickness C		O.D. Raised Face R	Dia. at Base of Hub X	Bore B	Length Thru Hub Y
		Slip-On	Blind				
26	33.00	1.25	1.25	30.00	28.50	26.25	2.25
28	35.00	1.25	1.38	32.00	30.50	28.25	2.25
30	37.00	1.25	1.38	34.00	32.50	30.25	2.25
32	39.50	1.25	1.50	36.25	34.63	32.25	2.50
34	41.50	1.25	1.63	38.25	36.63	34.25	2.50
36	43.50	1.25	1.63	40.25	38.63	36.25	2.50
42	50.00	1.25	1.88	46.50	44.75	42.25	2.75
48	56.00	1.25	2.13	52.50	50.75	48.25	2.88
54	62.50	1.38	2.38	59.00	57.25	54.25	3.13
60	68.50	1.63	2.63	65.00	63.25	60.25	3.63
66	75.50	1.75	2.88	71.63	69.50	66.25	4.00
72	81.50	2.00	3.13	77.63	75.50	72.25	4.50

Class 75

INDUSTRY STANDARD

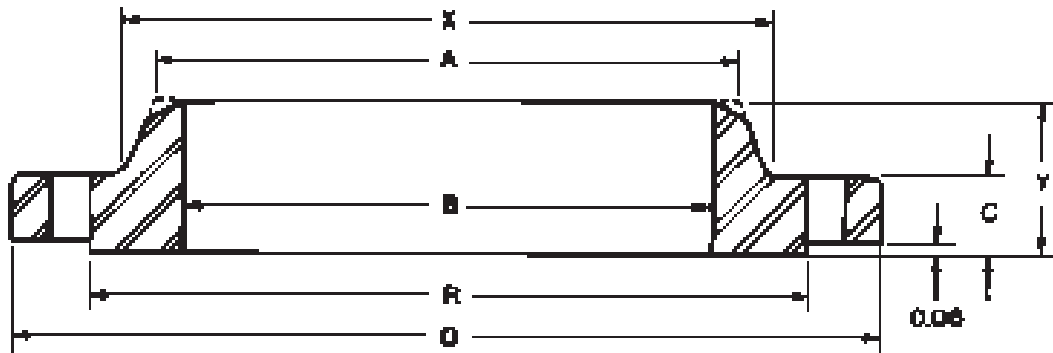


BLIND

Drilling			Approx. Weight		Nominal Size
Bolt Circle Dia.	Dia. Holes	No. Holes	Slip-On	Blind	
31.00	1.00	32	120	290	26
33.00	1.00	36	140	360	28
35.00	1.00	36	150	405	30
37.38	1.13	40	170	500	32
39.38	1.13	40	180	600	34
41.38	1.13	44	190	660	36
47.75	1.25	48	235	1000	42
53.75	1.25	56	270	1450	48
60.25	1.25	68	335	2000	54
66.25	1.25	72	450	2675	60
73.00	1.38	72	590	3550	66
79.00	1.38	80	730	4500	72

Class 75

INDUSTRY STANDARD

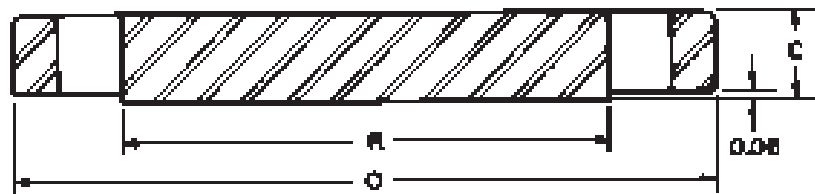


WELDING NECK

Nominal Size	Outside Dia. O	Thickness C		O.D. Raised Face R	Dia. at Base of Hub X	Bore B	Length Thru Hub Y	Dia. Hub at Bevel A
		Welding Neck	Blind					
26	31.50	1.15	1.25	28.63	27.13	To be specified by purchaser.	3.00	To be specified by purchaser.
28	33.50	1.25	1.25	30.63	29.13		3.00	
30	35.50	1.25	1.38	32.63	31.13		3.00	
32	38.25	1.25	1.50	35.00	33.38		3.25	
34	40.25	1.25	1.50	37.00	35.38		3.25	
36	42.25	1.25	1.63	39.00	37.38		3.25	
42	49.00	1.25	1.88	45.50	43.75		3.50	
48	55.00	1.25	2.13	51.50	49.75		3.75	
54	61.25	1.38	2.38	57.75	56.00		4.00	
60	67.25	1.63	2.63	63.75	62.00		4.38	
66	74.00	1.88	2.88	70.13	68.00		4.88	
72	80.00	2.25	3.13	76.13	74.00		5.25	

Class 75

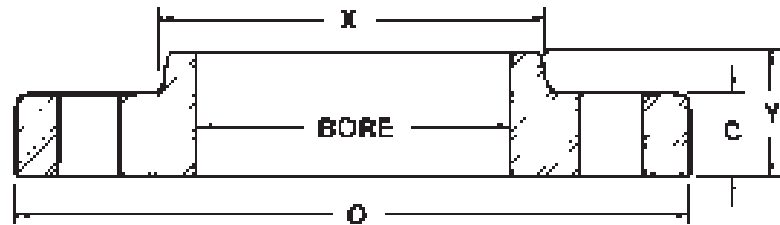
INDUSTRY STANDARD



BLIND

Drilling			Approx. Weight		Nominal Size
Bolt Circle	Dia. Holes	No. Holes	Welding Neck	Blind	
29.63	1.00	32	98	265	26
31.63	1.00	36	105	300	28
33.63	1.00	36	110	370	30
36.13	1.13	36	140	470	32
38.13	1.13	40	150	520	34
40.13	1.13	40	160	620	36
46.75	1.25	48	210	970	42
52.75	1.25	52	240	1375	48
59.00	1.25	64	310	1925	54
65.00	1.25	72	400	2575	60
71.50	1.38	72	560	3400	66
77.50	1.38	80	700	4350	72

Class 125 LW, AWWA C207 CLASSES B, D



SLIP-ON

Nominal Size	Outside Dia. O	Thickness C			Hub Dia. X	Bore	Length Thru Hub
		Slip-On 125 LW, B, D	B	D	X		Y ₂
6	11.00	0.56	0.69	0.69	7.56	6.72	1.25
8	13.50	0.56	0.69	0.69	9.68	8.72	1.25
10	16.00	0.68	0.69	0.69	12.00	10.88	1.25
12	19.00	0.68	0.69	0.81	14.38	12.88	1.25
14	21.00	0.75	0.69	0.94	15.75	14.14	1.25
16	23.50	0.75	0.69	1.00	18.00	16.16	1.25
18	25.00	0.75	0.69	1.06	19.88	18.18	1.25
20	27.50	0.75	0.69	1.13	22.00	20.20	1.25
22	29.50	1.00	0.75	1.19	24.25	22.22	1.75
24	32.00	1.00	0.75	1.25	26.13	24.25	1.75
26	34.25	1.00	0.81	1.31	28.50	26.25	1.75
28	36.50	1.00	0.88	1.31	30.50	28.25	1.75
30	38.75	1.00	0.88	1.38	32.50	30.25	1.75
32	41.75	1.13	0.94	1.50	34.75	32.25	1.75
34	43.75	1.13	0.94	1.50	36.75	34.25	1.75
36	46.00	1.13	1.00	1.63	38.75	36.25	1.75
38	48.75	1.13	1.00	1.63	40.75	38.25	1.75
40	50.75	1.13	1.00	1.63	43.00	40.25	1.75
42	53.00	1.25	1.13	1.75	45.00	42.25	1.75
44	55.25	1.25	1.13	1.75	47.00	44.25	2.25
46	57.25	1.25	1.13	1.75	49.00	46.25	2.25
48	59.50	1.38	1.25	1.75	51.00	48.25	2.50
50	61.75	1.38	1.25	2.00	53.00	50.25	2.50
52	64.00	1.38	1.25	2.00	55.00	52.25	2.50
54	66.25	1.38	1.33	2.13	57.00	54.25	2.50
60	73.00	1.50	1.50	2.25	63.00	60.25	2.75
66	80.00	1.50	1.63	2.50	69.00	66.25	2.75
72	86.50	1.50	1.75	2.63	75.00	72.25	2.75
84	99.75	1.75	2.00	2.75	87.50	84.25	3.00
96	113.25	2.00	2.25	3.00	100.00	96.25	3.25

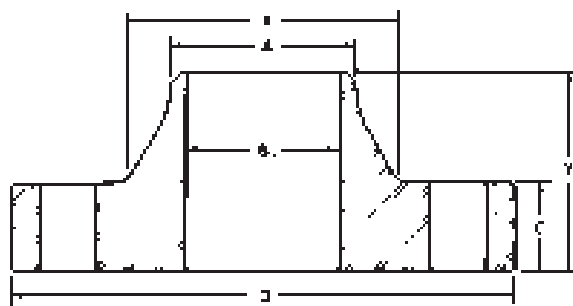
Class 125 LW, AWWA C207 CLASSES B, D



RING

Drilling				Approx. Weight			Nominal Size
Bolt Circle	Bolt Hole Dia.		No. Holes	Slip-On 125 LW, B & D	Ring		
	B	125 LW D			Size B	D	
9.50	3/4	0.88	8	13	11	12	6
11.75	3/4	0.88	8	18	14	15	8
14.25	3/4	1.00	12	26	20	20	10
17.00	3/4	1.00	12	42	30	33	12
18.75	7/8	1.13	12	44	36	50	14
21.25	7/8	1.13	16	58	43	60	16
22.75	7/8	1.25	16	59	45	65	18
25.00	7/8	1.25	20	69	50	80	20
27.25	7/8	1.38	20	76	60	90	22
29.50	7/8	1.38	20	115	70	110	24
31.75	7/8	1.38	24	125	85	130	26
34.00	7/8	1.38	28	140	100	145	28
36.00	1	1.38	28	150	110	165	30
38.50	1	1.63	28	205	145	210	32
40.50	1	1.63	32	215	150	220	34
42.75	1	1.63	32	235	175	265	36
45.25	1	1.63	32	265	200	300	38
47.25	1	1.63	36	280	205	315	40
49.50	1 1/8	1.63	36	330	250	365	42
51.75	1 1/8	1.63	40	350	265	385	44
53.75	1 1/8	1.63	40	365	275	400	46
56.00	1 1/8	1.63	44	425	325	430	48
58.25	1 1/4	1.88	44	450	340	500	50
60.50	1 1/4	1.88	44	475	360	540	52
62.75	1 3/8	1.88	44	500	420	615	54
69.25	1 3/8	1.88	52	640	535	760	60
76.00	1 3/8	1.88	52	750	700	1025	66
82.50	1 3/8	1.88	60	850	840	1200	72
95.50	1 5/8	2.13	64	1225	1200	1575	84
108.50	1 7/8	2.38	68	1725	1665	2125	96

Class 125 & AWWA C207 CLASS E

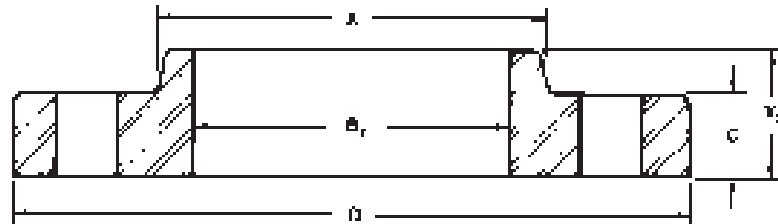


WELDING NECK

Nominal Size	Outside Dia. O	Thickness C	Hub Dia. X	Bore		Length Thru Hub	
		C	X	Welding Neck B ₁	Slip-On B ₂	Slip-On Y ₂	Welding Neck Y ₁
6	11.00	1.00	7.56		6.72	1.56	3.50
8	13.50	1.13	9.68		8.72	1.75	4.00
10	16.00	1.19	12.00		10.88	1.94	4.00
12	19.00	1.25	14.38		12.88	2.19	4.50
14	21.00	1.38	15.75		14.14	2.25	5.00
16	23.50	1.44	18.00		16.16	2.50	5.00
18	25.00	1.56	19.88		18.18	2.68	5.50
20	27.50	1.68	22.00		20.20	2.88	5.69
22	29.50	1.81	24.25		22.22	3.13	5.88
24	32.00	1.88	26.13		24.25	3.25	6.00
26	34.25	2.00	28.50		26.25	3.38	5.00
28	36.50	2.06	30.75		28.25	3.44	5.06
30	38.75	2.13	32.75		30.25	3.50	5.13
32	41.75	2.25	35.00		32.25	3.63	5.25
34	43.75	2.31	37.00		34.25	3.68	5.31
36	46.00	2.38	39.25		36.25	3.75	5.38
38	48.75	2.38	41.75		38.25	3.75	5.38
40	50.75	2.50	43.75		40.25	3.88	5.50
42	53.00	2.63	46.00		42.25	4.00	5.63
44	55.25	2.63	48.00		44.25	4.00	5.63
46	57.25	2.68	50.00		46.25	4.06	5.68
48	59.50	2.75	52.25		48.25	4.13	5.75
50	61.75	2.75	54.25		50.25	4.13	5.75
52	64.00	2.88	56.50		52.25	4.25	5.88
54	66.25	3.00	58.75		54.25	4.38	6.00
60	73.00	3.13	65.25		60.25	4.50	6.13
66	80.00	3.38	71.50		66.25	4.88	6.38
72	86.50	3.50	78.50		72.25	5.00	6.50
84	99.75	3.88	90.50		84.25	5.38	6.88
96	113.25	4.25	102.75		96.25	5.75	7.25

To be specified by purchaser.

Class 125 & AWWA C207 CLASS E

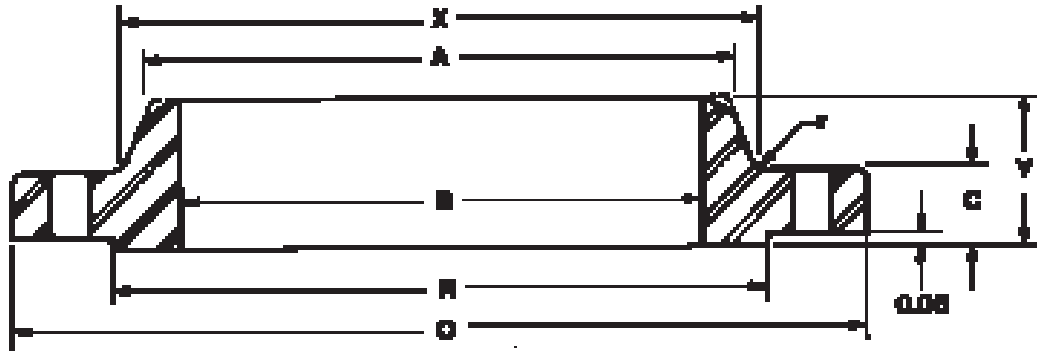


SLIP-ON

Dia. Hub at Bevel A	Drilling			Approx. Weight		Nominal Size
	Bolt Circle	Dia. Holes	No. Holes	Slip-On	Welding Neck	
6.63	9.50	0.88	8	19	24	6
8.63	11.75	0.88	8	30	39	8
10.75	14.25	1.00	12	43	52	10
12.75	17.00	1.00	12	64	80	12
14.00	18.75	1.13	12	85	110	14
16.00	21.25	1.13	16	93	140	16
18.00	22.75	1.25	16	120	150	18
20.00	25.00	1.25	20	155	180	20
22.00	27.25	1.38	20	175	225	22
24.00	29.50	1.38	20	210	255	24
26.00	31.75	1.38	24	235	265	26
28.00	34.00	1.38	28	270	295	28
30.00	36.00	1.38	28	305	340	30
32.00	38.50	1.63	28	375	410	32
34.00	40.50	1.63	32	400	440	34
36.00	42.75	1.63	32	450	495	36
38.00	45.25	1.63	32	530	570	38
40.00	47.25	1.63	36	570	620	40
42.00	49.50	1.63	36	650	710	42
44.00	51.75	1.63	40	690	750	44
46.00	53.75	1.63	40	730	800	46
48.00	56.00	1.63	44	800	870	48
50.00	58.25	1.88	44	830	900	50
52.00	60.50	1.88	44	920	1000	52
54.00	62.75	1.88	44	1025	1100	54
60.00	69.25	1.88	52	1250	1350	60
66.00	76.00	1.88	52	1625	1775	66
72.00	82.50	1.88	60	1925	2100	72
84.00	95.50	2.13	64	2600	2825	84
96.00	108.50	2.38	68	3275	3800	96

Class 150

B16.47, Ser. A



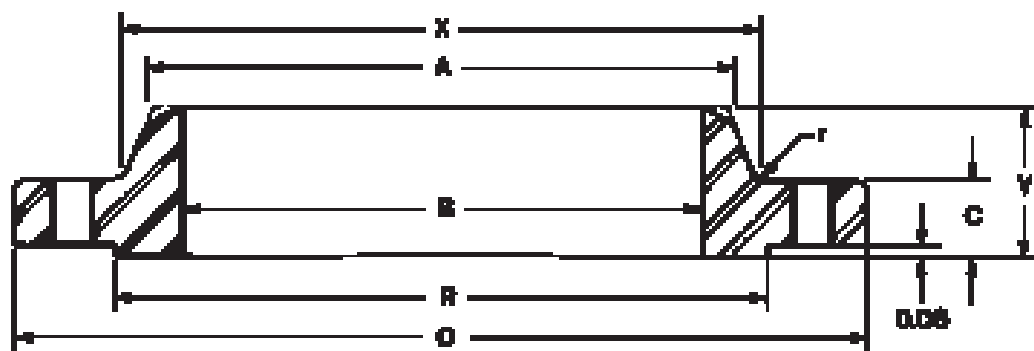
WELDING NECK

Nominal Size	Outside Dia. O	Thickness (Min.) C	Raised Face Dia. R	Hub Dia. X	Bore B	Length Thru Hub Y	Dia. Hub at Bevel A	Fillet Radius r	Drilling			Approx. Wt. WNF
									Bolt Circle	Dia. Holes	No. Holes	
26	34.25	2.69	29.50	26.62	To be specified by purchaser.	4.75	26.00	0.38	31.75	1.38	24	300
28	36.50	2.81	31.50	28.62		4.94	28.00	0.44	34.00	1.38	28	345
30	38.75	2.94	33.75	30.75		5.38	30.00	0.44	36.00	1.38	28	400
32	41.75	3.19	36.00	32.75		5.69	32.00	0.44	38.50	1.62	28	505
34	43.75	3.25	38.00	34.75		5.88	34.00	0.50	40.50	1.62	32	540
36	46.00	3.56	40.25	36.75		6.19	36.00	0.50	42.75	1.62	32	640
38	48.75	3.44	42.25	39.00		6.19	38.00	0.50	45.25	1.62	32	720
40	50.75	3.56	44.25	41.00		6.44	40.00	0.50	47.25	1.62	36	775
42	53.00	3.81	47.00	43.00		6.75	42.00	0.50	49.50	1.62	36	890
44	55.25	4.00	49.00	45.00		7.00	44.00	0.50	51.75	1.62	40	990
46	57.25	4.06	51.00	47.12		7.31	46.00	0.50	53.75	1.62	40	1060
48	59.50	4.25	53.50	49.12		7.56	48.00	0.50	56.00	1.62	44	1185
50	61.75	4.38	55.50	51.25		8.00	50.00	0.50	58.25	1.88	44	1270
52	64.00	4.56	57.50	53.25		8.25	52.00	0.50	60.50	1.88	44	1410
54	66.25	4.75	59.50	55.25		8.50	54.00	0.50	62.75	1.88	44	1585
56	68.75	4.88	62.00	57.38		9.00	56.00	0.50	65.00	1.88	48	1760
58	71.00	5.06	64.00	59.38	9.25	58.00	0.50	67.25	1.88	48	1915	
60	73.00	5.19	66.00	61.38	9.44	60.00	0.50	69.25	1.88	52	2045	

*SP-44 Class 150 blinds and Welding Neck Flanges have the same thickness. Blinds available upon request.

Class 150

B16.47, Ser. B



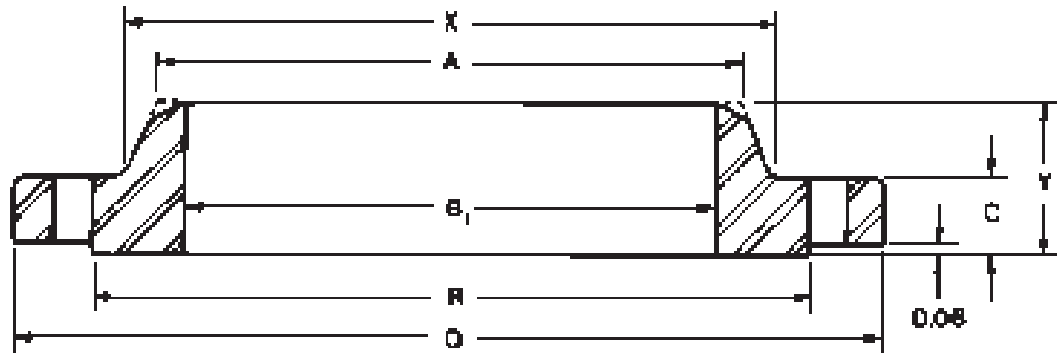
WELDING NECK

Nominal Size	Outside Dia. O	Thickness (Min.) C	Raised Face Dia. R	Hub Dia. X	Bore B	Length Thru Hub Y	Dia. Hub at Bevel A	Fillet Radius r	Drilling			Approx. Wt. WNF
									Bolt Circle	Dia. Holes	No. Holes	
26	30.94	1.62	28.00	26.94	To be specified by purchaser.	3.50	26.06	0.38	29.31	0.88	36	120
28	32.94	1.75	30.00	28.94		3.75	28.06	0.38	31.31	0.88	40	140
30	34.94	1.75	32.00	31.00		3.94	30.06	0.38	33.31	0.88	44	150
32	37.06	1.81	34.00	33.06		4.25	32.06	0.38	35.44	0.88	48	170
34	39.56	1.94	36.25	35.12		4.34	34.06	0.38	37.69	1.00	40	210
36	41.62	2.06	38.25	37.19		4.632	36.06	0.38	39.75	1.00	44	240
38	44.25	2.12	40.25	39.25		4.88	38.12	0.38	42.12	1.12	40	290
40	46.25	2.19	42.50	41.31		5.06	40.12	0.38	44.12	1.12	44	310
42	48.25	2.31	44.50	43.38		5.25	42.12	0.44	46.12	1.12	48	345
44	50.25	2.38	46.50	45.38		5.38	44.12	0.44	48.12	1.12	52	370
46	52.81	2.44	48.62	47.44		5.69	46.12	0.44	50.56	1.25	40	435
48	54.81	2.56	50.75	49.50		5.88	48.12	0.44	52.56	1.25	44	480
50	56.81	2.69	52.75	51.50		6.06	50.12	0.44	54.56	1.25	48	520
52	58.81	2.75	54.75	53.56		6.19	52.12	0.44	56.56	1.25	52	550
54	61.00	2.81	56.75	55.62		6.38	54.12	0.44	58.75	1.25	56	620
56	63.00	2.88	58.75	57.69		6.56	56.12	0.56	60.75	1.25	60	650
58	65.94	2.94	60.75	59.69	6.88	58.12	0.56	63.44	1.38	48	780	
60	67.94	3.00	63.00	61.81	7.06	60.12	0.56	65.44	1.38	52	850	

Blinds available upon request.

Class 175

INDUSTRY STANDARD



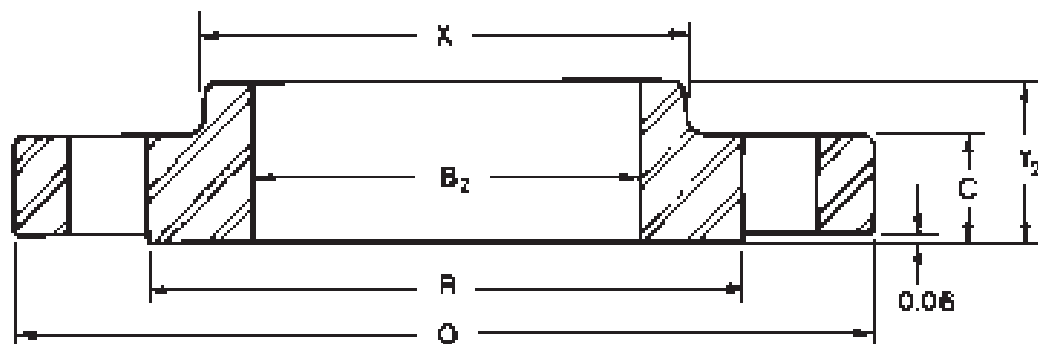
WELDING NECK

Nominal Size	Outside Dia. O	Thickness C			Raised Face Dia. R	Hub Dia. X	Bore		Length Thru Hub Y		Dia. Hub at Bevel A
		Welding Neck	Slip-On	Blind			B ₁	B ₂	Welding Neck	Slip-On	
26	31.50	1.38	1.38	1.78	29.00	27.63	26.25	3.38	2.75	To be specified by purchaser.	
28	33.50	1.38	1.38	2.00	31.00	29.63	28.25	3.38	2.75		
30	35.75	1.38	1.38	2.13	33.25	31.88	30.25	3.63	2.75		
32	37.75	1.38	1.38	2.25	35.25	33.88	32.25	3.63	2.75		
34	40.25	1.50	1.75	2.38	37.38	35.88	34.25	3.75	3.38		
36	42.25	1.50	1.75	2.50	39.38	37.88	36.25	3.75	3.38		
38	44.25	1.75	2.00	2.63	41.38	39.88	38.25	4.13	3.75		
40	46.25	1.75	2.00	2.75	43.38	41.88	40.25	4.13	4.00		
42	49.00	2.00	2.38	2.88	45.75	44.13	42.25	4.50	4.38		
44	51.00	2.00	2.38	3.00	47.75	46.13	44.25	4.50	4.38		
46	53.00	2.00	2.38	3.13	49.75	48.13	46.25	4.50	4.63		
48	55.00	2.25	2.63	3.38	51.75	50.13	48.25	4.88	4.88		
50	57.00	2.25	2.63	3.38	53.75	52.13	50.25	4.88	4.88		
52	59.50	2.63	3.00	3.63	56.00	54.25	52.25	5.38	5.38		
54	61.50	2.63	3.00	3.63	58.00	56.25	54.25	5.38	5.38		
60	67.50	2.75	3.13	4.00	64.00	62.25	60.25	5.75	5.88		
66	73.50	3.13	4.00	4.38	70.00	68.50	66.25	6.13	6.88		
72	80.00	3.63	5.00	4.75	76.50	74.50	72.25	6.63	8.00		

Notes: Sizes are nominal **inside** diameters of pipe or shell used with Welding Neck flanges, and nominal **outside** diameters of pipe or shell used with Slip-On Flanges.

Class 175

INDUSTRY STANDARD

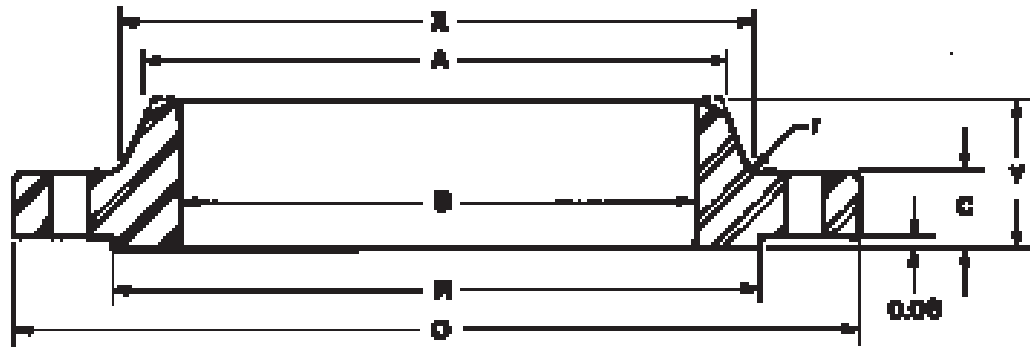


SLIP-ON

Drilling			Approx. Weight			Nominal Size
Bolt Circle Dia.	Dia. Holes	No. Holes	Welding Neck	Slip-On	Blind	
29.88	0.88	28	120	105	405	26
31.88	0.88	28	130	115	490	28
34.13	0.88	36	150	130	590	30
36.13	0.88	36	160	140	700	32
38.38	1.00	36	195	200	840	34
40.38	1.00	36	205	210	970	36
42.38	1.00	36	245	250	1125	38
44.38	1.00	40	255	270	1300	40
46.88	1.13	40	340	365	1500	42
48.88	1.13	40	360	380	1700	44
50.88	1.13	40	375	410	1925	46
52.88	1.13	44	430	460	2225	48
54.88	1.13	44	450	480	2400	50
57.25	1.25	44	560	600	2800	52
59.25	1.25	44	580	620	3000	54
65.25	1.25	48	680	730	4000	60
74.25	1.25	56	830	1000	5175	66
77.75	1.25	64	1075	1400	6650	72

Class 300

B16.47, Ser. A



WELDING NECK

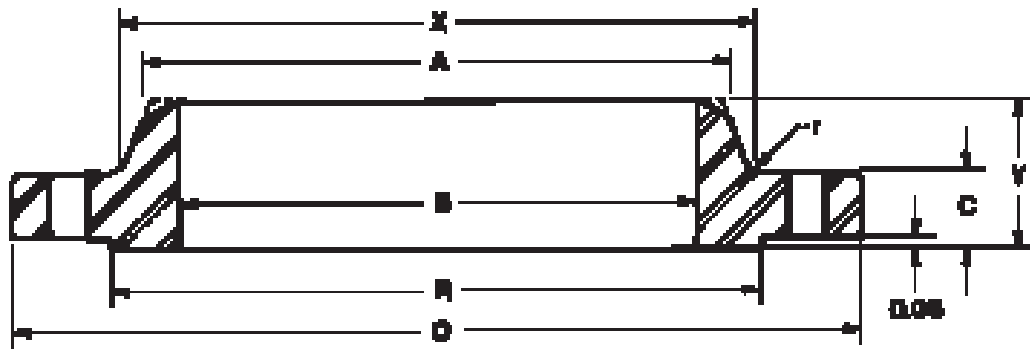
Nominal Size	Outside Dia. O	Thickness C		Raised Face Dia. R	Hub Dia. X	Bore B	Length Thru Hub Y	Dia. Hub at Bevel A	Fillet Radius r	Drilling			Approx. Wt. WNF
		WNF	BF							Bolt Circle	Dia. Holes	No. Holes	
26	38.25	3.12	3.31	29.50	28.38		7.25	26.00	0.38	34.50	1.75	28	605
28	40.75	3.38	3.56	31.50	30.50		7.75	28.00	0.44	37.00	1.75	28	745
30	43.00	3.62	3.75	33.75	32.56		8.25	30.00	0.44	39.25	1.88	28	870
32	45.25	3.88	3.94	36.00	34.69		8.75	32.00	0.44	41.50	2.00	28	1005
34	47.50	4.00	4.12	38.00	36.88		9.12	34.00	0.50	43.50	2.00	28	1145
36	50.00	4.12	4.38	40.25	39.00		9.50	36.00	0.50	46.00	2.12	32	1275
38	46.00	4.25	4.25	40.50	39.12		7.12	38.00	0.50	43.00	1.62	32	695
40	48.75	4.50	4.50	42.75	41.25		7.63	40.00	0.50	45.50	1.75	32	840
42	50.75	4.69	4.69	44.75	43.25		7.88	42.00	0.50	47.50	1.75	32	950
44	53.25	4.88	4.88	47.00	45.25		8.12	44.00	0.50	49.75	1.88	32	1055
46	55.75	5.06	5.06	49.00	47.38		8.50	46.00	0.50	52.00	2.00	28	1235
48	57.75	5.25	5.25	51.25	49.38		8.81	48.00	0.50	54.00	2.00	32	1380
50	60.25	5.50	5.50	53.50	51.38		9.12	50.00	0.50	56.25	2.12	32	1530
52	62.25	5.69	5.69	55.50	53.38		9.38	52.00	0.50	58.25	2.12	32	1660
54	65.25	6.00	6.00	57.75	55.50		9.94	54.00	0.50	61.00	2.38	28	2050
56	67.25	6.06	6.06	59.75	57.62		10.25	56.00	0.50	63.00	2.38	28	2155
58	69.25	6.25	6.25	62.00	59.62		10.50	58.00	0.50	65.00	2.38	32	2270
60	71.25	6.44	6.44	64.00	61.62		10.75	60.00	0.50	67.00	2.38	32	2470

To be specified by purchaser.

Sizes 12" thru 24" identical to ASME B16.5 except when a single taper hub is required.

Class 300

B16.47, Ser. B

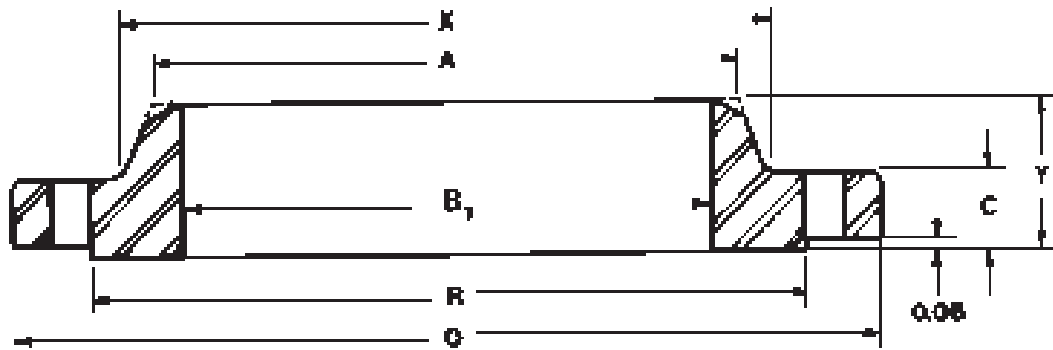


WELDING NECK

Nominal Size	Outside Dia. O	Thickness (Min.) C	Raised Face Dia. R	Hub Dia. X	Bore B	Length Thru Hub Y	Dia. Hub at Bevel A	Fillet Radius r	Drilling			Approx. Wt. WNF
									Bolt Circle	Dia. Holes	No. Holes	
26	34.12	3.50	29.00	27.62	To be specified by purchaser.	5.69	26.19	0.56	31.62	1.38	32	400
28	36.25	3.50	31.00	29.75		5.88	28.19	0.56	33.75	1.38	36	450
30	39.00	3.69	33.25	32.00		6.22	30.25	0.56	36.25	1.50	36	550
32	41.50	4.06	35.50	34.00		6.62	32.25	0.63	38.50	1.62	32	685
34	43.62	4.06	37.50	36.12		6.81	34.25	0.63	40.62	1.62	36	750
36	46.12	4.06	39.75	38.00		7.12	36.25	0.63	42.88	1.75	32	840
38	48.12	4.38	41.75	40.00		7.56	38.25	0.63	44.88	1.75	36	915
40	50.12	4.56	43.88	42.00		7.81	40.25	0.63	46.88	1.75	40	990
42	52.50	4.69	46.00	44.00		8.06	42.31	0.63	49.00	1.88	36	1135
44	54.50	5.00	48.00	46.19		8.44	44.31	0.63	51.00	1.88	40	1235
46	57.50	5.06	50.00	48.38		8.75	46.31	0.63	53.75	2.00	36	1470
48	59.50	5.06	52.25	50.31		8.81	48.31	0.63	55.75	2.00	40	1575
50	61.50	5.44	54.25	52.38		9.25	50.31	0.63	57.75	2.00	44	1710
52	63.50	5.62	56.25	54.44		9.56	52.31	0.63	59.75	2.00	48	1840
54	65.88	5.38	58.25	56.50	9.44	54.31	0.63	62.12	2.00	48	1980	
56	69.50	6.06	60.50	58.81	10.56	56.31	0.69	65.00	2.38	36	2595	
58	71.94	6.06	62.75	60.94	10.81	58.31	0.69	67.44	2.38	40	2770	
60	73.94	5.94	65.00	62.94	10.69	60.31	0.69	69.44	2.38	40	2870	

Class 350

INDUSTRY STANDARD



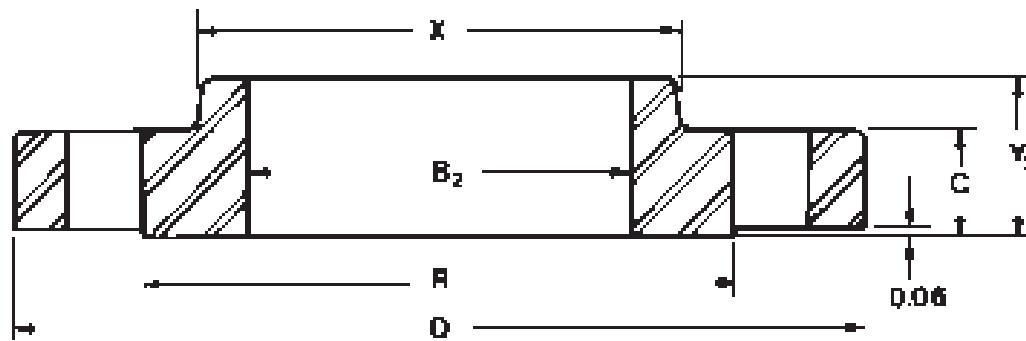
WELDING NECK

Nominal Size	Outside Dia. O	Thickness C			Raised Face Dia. R	Hub Dia. X	Bore		Length Thru Hub Y	
		Welding Neck	Slip-On	Blind			B ₁	B ₂	Welding Neck	Slip-On
26	32.75	2.50	2.50	2.75	29.50	27.88	To be specified by purchaser.	26.25	5.00	4.50
28	34.75	2.50	2.50	2.88	31.50	29.88		28.25	5.00	4.50
30	37.00	2.63	2.63	3.00	33.75	32.13		30.25	5.25	4.75
32	39.00	2.75	2.75	3.25	35.75	34.13		32.25	5.50	5.00
34	41.00	2.88	2.88	3.38	37.75	36.13		34.25	5.75	5.13
36	43.75	3.13	3.13	3.63	40.25	38.50		36.25	6.13	5.63
38	45.75	3.13	3.13	3.75	42.25	40.50		38.25	6.13	5.63
40	47.75	3.25	3.25	4.00	44.25	42.50		40.25	6.25	5.88
42	50.00	3.50	3.50	4.13	46.50	44.75		42.25	6.50	6.13
44	52.75	3.75	3.75	4.38	48.88	46.75		44.25	6.75	6.75
46	54.75	4.25	4.25	4.75	50.88	48.75		46.25	7.25	7.25
48	56.75	4.25	4.25	4.75	52.88	50.75		48.25	7.25	7.25
52	61.50	4.25	—	—	57.25	55.00		52.25	7.50	—
54	63.50	4.50	4.75	—	59.25	57.00		54.25	7.75	8.25
60	69.50	4.50	5.00	—	65.25	63.00	60.25	8.00	8.50	
66	77.00	4.00	—	—	72.38	70.00	66.25	8.50	—	
72	83.00	4.00	—	—	78.38	76.00	72.25	9.00	—	

Notes: Sizes are nominal **inside** diameters of pipe or shell used with Welding Neck Flanges, and nominal **outside** diameters of pipe or shell used with Slip-On Flanges. Diameter of hub at Bevel to be specified by purchaser.

Class 350

INDUSTRY STANDARD

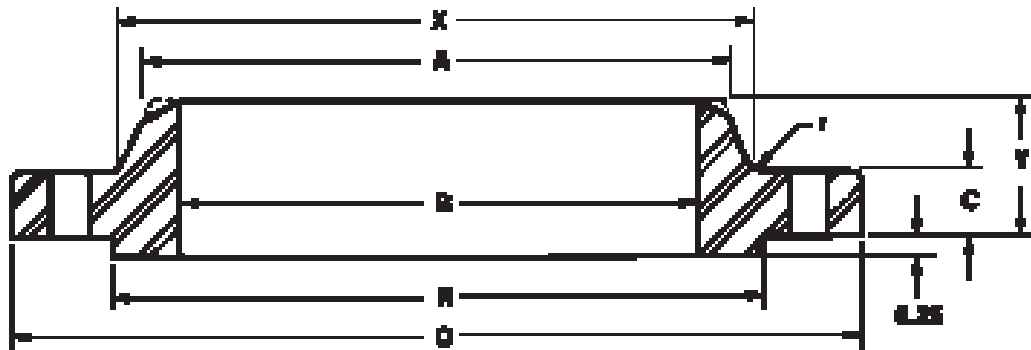


SLIP-ON

Drilling			Approx. Weight			Nominal Size
Bolt Circle Dia.	Dia. Holes	No. Holes	Welding Neck	Slip-On	Blind	
30.63	1.13	28	245	225	580	26
32.63	1.13	28	260	250	750	28
34.88	1.13	32	305	295	890	30
36.88	1.13	36	340	325	1050	32
38.88	1.13	40	375	355	1225	34
41.50	1.25	40	480	465	1500	36
43.50	1.25	40	510	490	1700	38
45.50	1.25	44	540	530	1975	40
47.75	1.25	48	640	620	2225	42
50.25	1.38	44	760	760	2625	44
52.25	1.38	48	880	880	2950	46
54.25	1.38	48	920	920	3300	48
58.75	1.50	52	1025	—	—	52
60.75	1.50	52	1200	1150	—	54
66.75	1.50	60	1325	1450	—	60
74.00	1.63	60	1675	—	—	66
80.00	1.63	72	1850	—	—	72

Class 400

B16.47 Series A B16.47 Series B



WELDING NECK

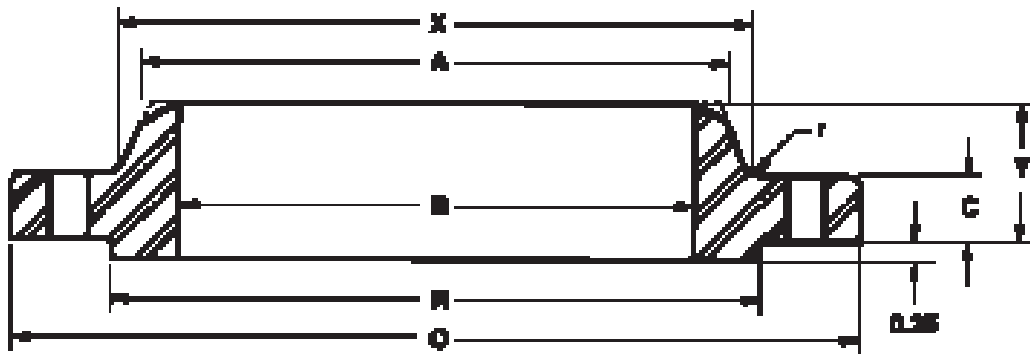
Nominal Size	Outside Dia. O	Thickness C		Raised Face Dia. R	Hub Dia. X	Bore B	Length Thru Hub Y	Dia. Hub at Bevel A	Fillet Radius r	Drilling			Approx. Wt. WNF
		WNF	BF							Bolt Circle	Dia. Holes	No. Holes	
B16.47 Ser A Sizes 12" thru 24" identical to ASME B16.5 except when a single taper hub is required.													
26	38.25	3.50	3.88	29.50	28.62	To be specified by purchaser.	7.62	26.00	0.44	34.50	1.88	28	650
28	40.75	3.75	4.12	31.50	30.81		8.12	28.00	0.50	37.00	2.00	28	785
30	43.00	4.00	4.38	33.75	32.94		8.62	30.00	0.50	39.25	2.12	28	905
32	45.25	4.25	4.56	36.00	35.00		9.12	32.00	0.50	41.50	2.12	28	1065
34	47.50	4.38	4.81	38.00	37.18		9.50	34.00	0.56	43.50	2.12	28	1200
36	50.00	4.50	5.06	40.25	39.38		9.88	36.00	0.56	46.00	2.12	32	1340
B16.47 Ser B													
26	33.50	3.50	—	28.00	27.12	To be specified by purchaser.	5.88	26.00	0.44	30.75	1.50	28	360
28	36.00	3.75	—	30.00	29.12		6.25	28.00	0.50	33.00	1.62	24	450
30	38.25	4.00	—	32.25	31.25		6.69	30.00	0.50	35.25	1.62	28	530
32	40.75	4.25	—	34.38	33.25		7.06	32.00	0.50	37.50	1.75	28	635
34	42.75	4.38	—	36.50	35.38		7.38	34.00	0.56	39.50	1.75	32	690
36	45.50	4.69	—	38.62	37.50		7.88	36.00	0.56	42.00	1.75	28	855

Length thru Hub does not include 1/4" Raised Face.

Class 400

B16.47 Series A

B16.47 Series B



WELDING NECK

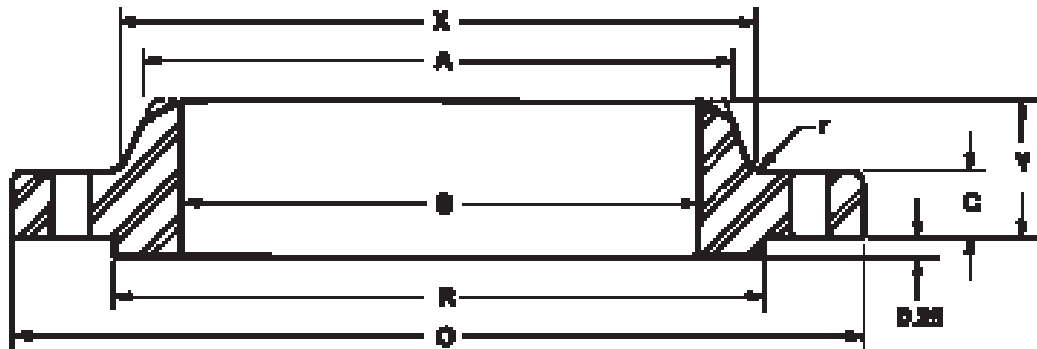
Nominal Size	Outside Dia. O	Thickness C		Raised Face Dia. R	Hub Dia. X	Bore B	Length Thru Hub Y	Dia. Hub at Bevel A	Fillet Radius r	Drilling			Approx. Wt. WNF
		WNF	BF							Bolt Circle	Dia. Holes	No. Holes	
B16.47 Ser A and Ser B are identical in sizes 38" thru 60".													
38	47.50	4.88	4.88	40.75	39.50	To be specified by purchaser.	8.12	38.00	0.56	44.00	1.88	32	935
40	50.00	5.12	5.12	43.00	41.50		8.50	40.00	0.56	46.25	2.00	32	1090
42	52.00	5.25	5.25	45.00	43.62		8.81	42.00	0.56	48.25	2.00	32	1190
44	54.50	5.50	5.50	47.25	45.62		9.18	44.00	0.56	50.50	2.12	32	1375
46	56.75	5.75	5.75	49.50	47.75		9.62	46.00	0.56	52.75	2.12	36	1525
48	59.50	6.00	6.00	51.50	49.88		10.12	48.00	0.56	55.25	2.38	28	1790
50	61.75	6.19	6.25	53.62	52.00		10.56	50.00	0.56	57.50	2.38	32	1950
52	63.75	6.38	6.44	55.62	54.00		10.88	52.00	0.56	59.50	2.38	32	2125
54	67.00	6.69	6.75	57.88	56.12		11.38	54.00	0.56	62.25	2.62	28	2565
56	69.00	6.88	6.94	60.12	58.25		11.75	56.00	0.56	64.25	2.62	32	2710
58	71.00	7.00	7.12	62.12	60.25		12.06	58.00	0.56	66.25	2.62	32	3230
60	74.25	7.31	7.44	64.38	62.38	12.56	60.00	0.56	69.00	2.88	32	3820	

Length thru Hub does not include 1/4" Raised Face.

Class 600

B16.47 Series A

B16.47 Series B



WELDING NECK

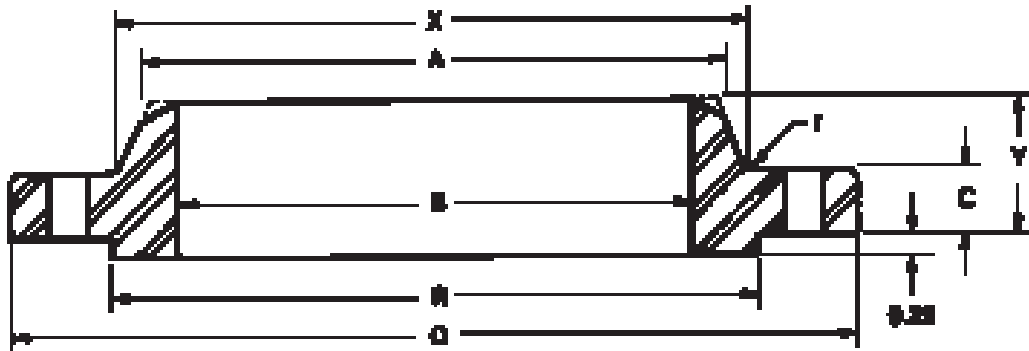
Nominal Size	Outside Dia. O	Thickness C		Raised Face Dia. R	Hub Dia. X	Bore B	Length Thru Hub Y	Dia. Hub at Bevel A	Fillet Radius r	Drilling			Approx. Wt. WNF
		WNF	BF							Bolt Circle	Dia. Holes	No. Holes	
B16.47 Ser A Sizes 12" thru 24" identical to ASME B16.5 except when a single taper hub is required.													
26	40.00	4.25	4.94	29.50	29.44	To be specified by purchaser.	8.75	26.00	0.50	36.00	2.00	28	940
28	42.25	4.38	5.18	31.50	31.62		9.25	28.00	0.50	38.00	2.12	28	1060
30	44.50	4.50	5.50	33.75	33.94		9.75	30.00	0.50	40.25	2.12	28	1210
32	47.00	4.62	5.81	36.00	36.12		10.25	32.00	0.50	42.50	2.12	28	1375
34	49.00	4.75	6.06	38.00	38.31		10.62	34.00	0.56	44.50	2.38	28	1540
36	51.75	4.88	6.38	40.25	40.62		11.12	36.00	0.56	47.00	2.62	28	1705
B16.47 Ser B													
26	35.00	4.38	4.38	28.62	27.50	To be specified by purchaser.	7.12	26.00	0.50	31.75	1.75	28	550
28	37.50	4.56	4.56	30.88	29.62		7.50	28.00	0.50	34.00	1.88	28	650
30	40.25	4.94	5.00	33.12	31.75		8.06	30.00	0.50	36.50	2.00	28	810
32	42.75	5.12	5.31	35.25	33.88		8.50	33.00	0.50	38.75	2.12	28	950
34	45.75	5.56	5.68	37.50	36.00		9.19	34.00	0.56	41.50	2.38	24	1205
36	47.75	5.75	5.94	39.75	38.12		9.56	36.00	0.56	43.50	2.38	28	1340

Length thru Hub does not include 1/4" Raised Face.

Class 600

B16.47 Series A

B16.47 Series B



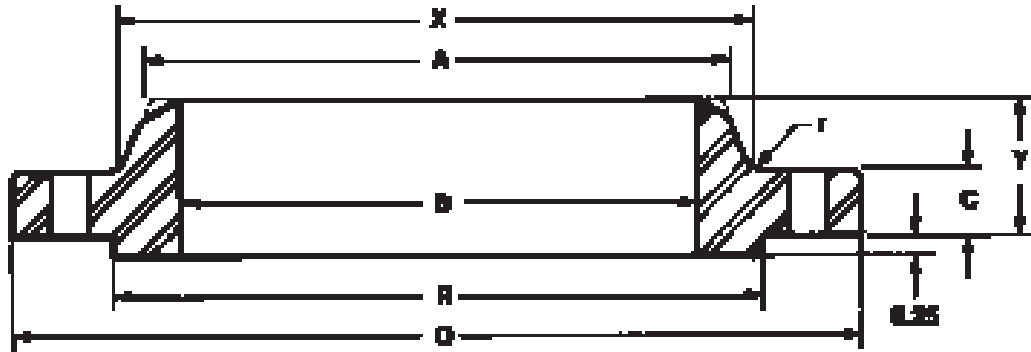
WELDING NECK

Nominal Size	Outside Dia. O	Thickness C		Raised Face Dia. R	Hub Dia. X	Bore B	Length Thru Hub Y	Dia. Hub at Bevel A	Fillet Radius r	Drilling			Approx. Wt. WNF
		WNF	BF							Bolt Circle	Dia. Holes	No. Holes	
B16.47 Ser A and Ser B are identical in sizes 38" thru 60".													
38	50.00	6.00	6.12	41.50	40.25	To be specified by purchaser.	10.00	38.00	0.56	45.75	2.38	28	1470
40	52.00	6.25	6.38	43.75	42.25		10.38	40.00	0.56	47.75	2.38	32	1630
42	55.25	6.62	6.75	46.00	44.38		11.00	42.00	0.56	50.50	2.62	28	2030
44	57.25	6.81	7.00	48.25	46.50		11.38	44.00	0.56	52.50	2.62	32	2160
46	59.50	7.06	7.31	50.25	48.62		11.81	46.00	0.56	54.75	2.62	32	2410
48	62.75	7.44	7.69	52.50	50.75		12.44	48.00	0.56	57.50	2.88	32	2855
50	65.75	7.75	8.00	54.50	52.88		12.94	50.00	0.56	60.00	3.12	28	3330
52	67.75	8.00	8.25	56.50	54.88		13.25	52.00	0.56	62.00	3.12	32	3560
54	70.00	8.25	8.56	58.75	57.00		13.75	54.00	0.56	64.25	3.12	32	3920
56	73.00	8.56	8.88	60.75	59.12		14.25	56.00	0.62	66.75	3.38	32	4280
58	75.00	8.75	9.12	63.00	61.12		14.56	58.00	0.62	68.75	3.38	32	4640
60	78.50	9.19	9.56	65.25	63.38	15.31	60.00	0.69	71.75	3.62	28	5000	

Length thru Hub does not include 1/4" Raised Face.

Class 900

B16.47 Series A B16.47 Series B



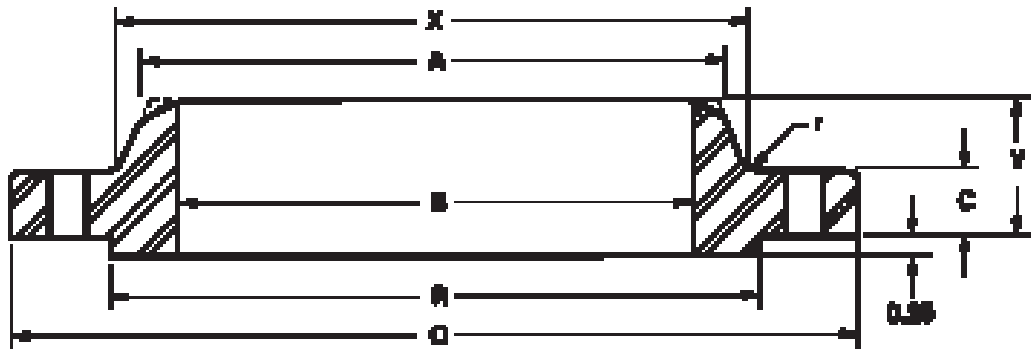
WELDING NECK

Nominal Size	Outside Dia. O	Thickness C		Raised Face Dia. R	Hub Dia. X	Bore B	Length Thru Hub Y	Dia. Hub at Bevel A	Fillet Radius r	Drilling			Approx. Wt. WNF
		WNF	BF							Bolt Circle	Dia. Holes	No. Holes	
B16.47 Ser A Sizes 12" thru 24" identical to ASME B16.5 except when a single taper hub is required.													
26	42.75	5.50	6.31	29.50	30.50	To be specified by purchaser.	11.25	26.00	0.44	37.50	2.88	20	1525
28	46.00	5.62	6.75	31.50	32.75		11.75	28.00	0.50	40.25	3.12	20	1810
30	48.50	5.88	7.18	33.75	35.00		12.25	30.00	0.50	42.75	3.12	20	2120
32	51.75	6.25	7.62	36.00	37.25		13.00	32.00	0.50	45.50	3.38	20	2545
34	55.00	6.50	8.06	38.00	39.62		13.75	34.00	0.56	48.25	3.62	20	2970
36	57.50	6.75	8.44	40.25	41.88		14.25	36.00	0.56	50.75	3.62	20	3395
B16.47 Ser B													
26	40.25	5.31	6.06	30.00	29.25	10.19	26.00	0.44	35.50	2.62	20	1050	
28	43.50	5.81	6.56	32.25	31.38	10.88	28.00	0.50	38.25	2.88	20	1520	
30	46.50	6.12	6.93	34.50	33.50	11.38	30.00	0.50	40.75	3.12	20	1820	
32	48.75	6.31	7.31	36.50	35.75	11.94	32.00	0.50	43.00	3.12	20	2065	
34	51.75	6.75	7.68	39.00	37.88	12.56	34.00	0.56	45.50	3.38	20	2450	
36	53.00	6.81	7.94	40.50	40.00	12.81	36.00	0.56	47.25	3.12	24	2520	

Length thru Hub does not include 1/4" Raised Face.

Class 900

B16.47 Series A B16.47 Series B



WELDING NECK

Nominal Size	Outside Dia. O	Thickness C		Raised Face Dia. R	Hub Dia. X	Bore B	Length Thru Hub Y	Dia. Hub at Bevel A	Fillet Radius r	Drilling			Approx. Wt. WNF
		WNF	BF							Bolt Circle	Dia. Holes	No. Holes	
B16.47 Ser A and Ser B are identical in sizes 38" thru 48".													
38	57.50	7.50	8.50	43.25	42.25	To be specified by purchaser.	13.88	38.00	0.75	50.75	3.62	20	3385
40	59.50	7.75	8.81	45.75	44.38		14.31	40.00	0.81	52.75	3.62	24	3620
42	61.50	8.12	9.12	47.75	46.31		14.63	42.00	0.81	54.75	3.62	24	3960
44	64.88	8.44	9.56	50.00	48.62		15.38	44.00	0.88	57.62	3.88	24	4300
46	68.25	8.88	10.06	52.50	50.88		16.18	46.00	0.88	60.50	4.12	24	4640
48	70.25	9.19	10.38	54.50	52.88		16.50	48.00	0.94	62.50	4.12	24	4980

Length thru Hub does not include 1/4" Raised Face.